

HFE-tec[®] muratura High Fracture
Energy Technologies



INNOVAZIONE

ECC – *Engineered Cementitious Composites*

- **Sistemi Razionali di Riparazione, Rinforzo Strutturale ed Adeguamento Sismico di Murature**
- **Resistenza al Fuoco**
- **Anticorrosione**

Sistemi Innovativi ad Altissime Prestazioni

↘ SISTEMI

HFE-tec[®] muratura

High Fracture Energy

High Deformation Energy

***INTONACATURE ARMATE E NON ARMATE
AD ALTA ENERGIA DI FRATTURA
E DI DEFORMAZIONE
PER IL RINFORZO STRUTTURALE
ED ADEGUAMENTO SISMICO
DI MURATURE PORTANTI,
TAMPONATURE, PARTIZIONI***

DUTTILITA'

DISSIPAZIONE DI ENERGIA

RIGIDEZZA

TEST COMPRESSIONE DIAGONALE

TENSIONE TANGENZIALE

DEFORMAZIONE LIMITE A TAGLIO

↘ SISTEMI

HFE-tec[®] muratura

SISTEMI DI INTONACATURA ARMATA AD ELEVATA DUTTILITÀ PER IL RINFORZO STRUTTURALE ED ADEGUAMENTO SISMICO DI MURATURE

La tecnica di consolidamento mediante intonaci armati consiste nel realizzare, in aderenza alla superficie muraria da rinforzare, delle lastre di malta, armate con rete, solidarizzate alla muratura tramite connettori passanti.

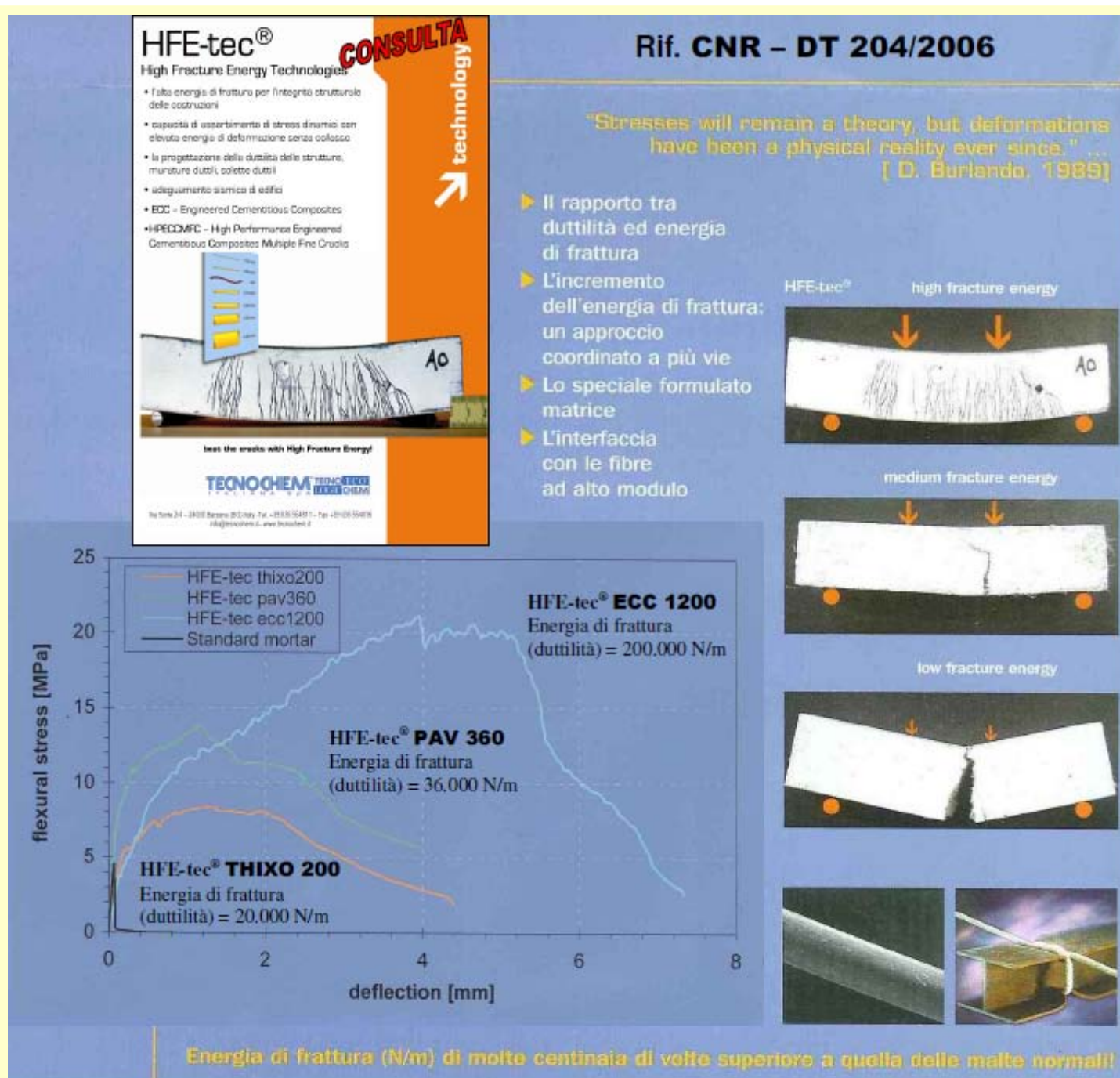
La tecnica consente di migliorare le caratteristiche di **resistenza** dell'apparato murario, grazie all'incremento di sezione resistente apportato dalle lastre e all'effetto di confinamento esercitato sulla muratura degradata, e di aumentarne nel contempo la **duttilità**. Può risultare adatta a quelle murature in stato di degrado particolarmente avanzato e non in grado di sopportare eccessive manipolazioni (in presenza di quadri fessurativi complessi ed estesi, altre tecniche, come le iniezioni o la costruzione muraria, possono infatti risultare difficilmente applicabili).

La tecnica è anche valida per rinforzare zone limitate di una parete particolarmente ammalorata, oppure intersezioni verticali delle pareti non sufficientemente connesse. Il consolidamento con intonacature armate è un metodo semplice e piuttosto rapido, adatto per murature anche molto scadenti ma, quando adottato in modo esteso, necessita di adeguato dimensionamento ed omogenea distribuzione strutturale .

L'applicazione delle intonacature armate non prevede alterazioni allo stato di sollecitazione della struttura durante l'esecuzione, ma può modificare la rigidità delle pareti e quindi la loro risposta sismica .

L'applicazione dei **Sistemi** **HFE-tec[®] muratura** consente la massima affidabilità di tali tecniche attraverso i seguenti ruoli fondamentali: la **Duttilità** e l'**Energia di Deformazione Intrinseche** della **Malta Utilizzata**, le **Capacità Adesive** della **Malta al Supporto Murario**, alcune **Peculiarità** nelle **Caratteristiche Meccaniche** della **Malta**, la **scelta dell'Armatura** e dei **Connettori Trasversali**, la **Corretta Applicazione**.

Il Sistema di **Rinforzo Strutturale** **HFE-tec[®] muratura** garantisce il trasferimento e la distribuzione degli sforzi dalla muratura alla lastra armata con la massima **Duttilità** ed **Energia di Frattura** del **SISTEMA** , Requisiti Essenziali particolarmente nel caso di Stress Sismici.



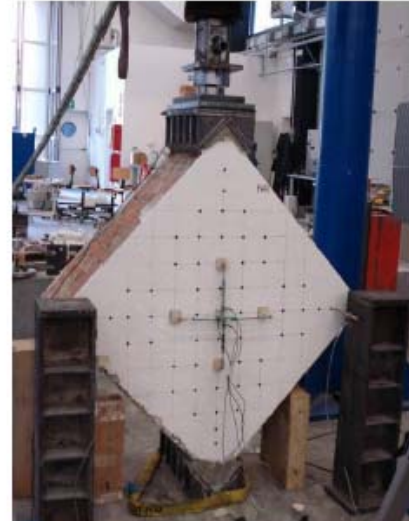
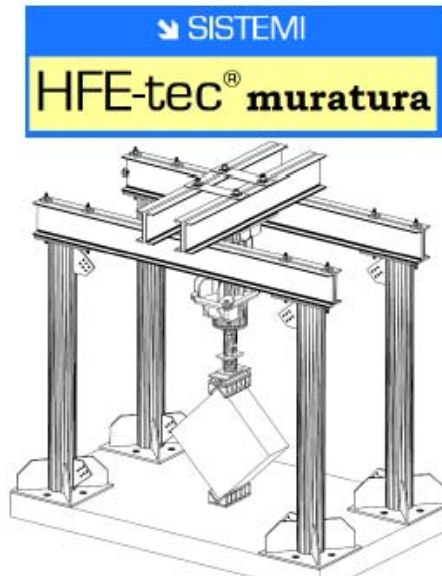
Con gli Ingegneri e i Tecnici del ns. **Ufficio Assistenza Promozione Progettuale dal Progetto al Cantiere**

➔ SISTEMI

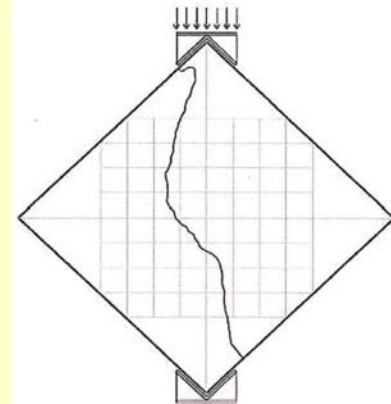
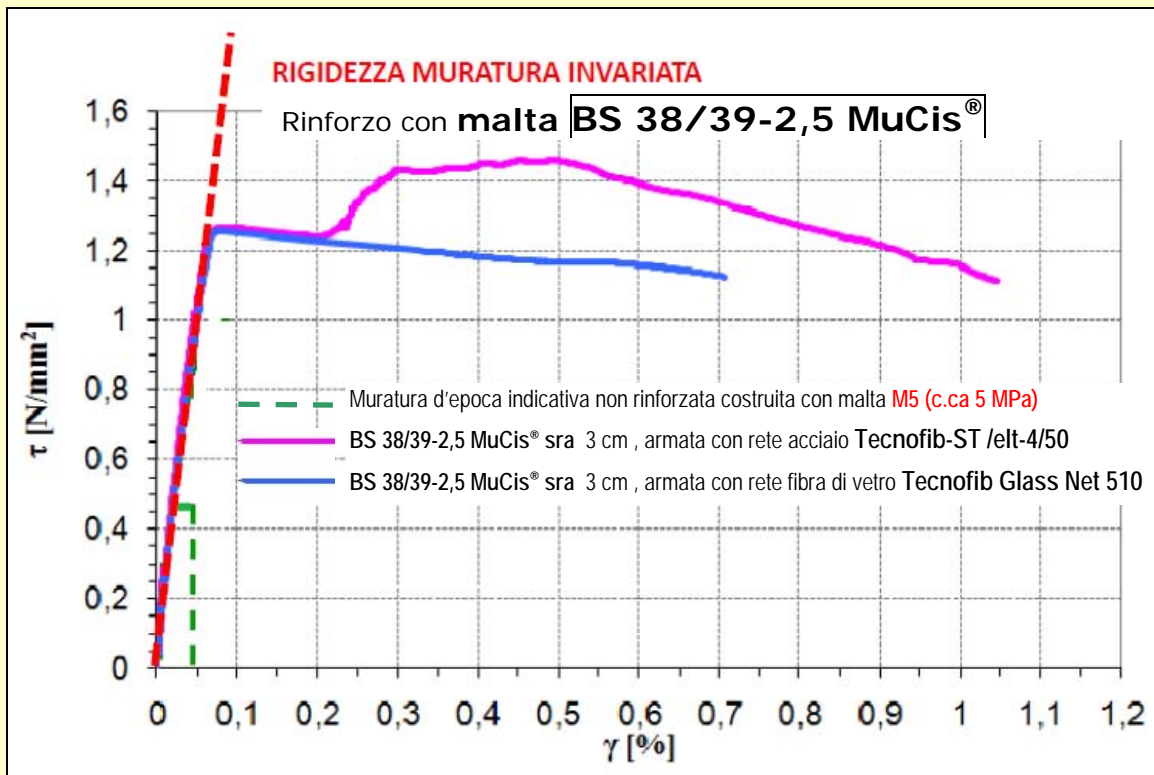
HFE-tec® muratura

- Nei **Sistemi HFE-tec® muratura** tutti i materiali che compongono la Progettazione dei Rinforzi Strutturali svolgono Ruoli Fondamentali e Sinergici nel Trasferimento degli Sforzi dalla MURATURA al SISTEMA DI RINFORZO.
- I **Sistemi HFE-tec® muratura** consentono il Ripristino Durevole Funzionale nelle diverse Situazioni di Degrado e nelle diverse Finalità del Rinforzo Strutturale anche se con Adeguamento Sismico.
- Fondamentale il ruolo svolto dalla qualità dei Leganti ed Armature utilizzati che devono consentire:
 - **Incremento della Duttività senza variazioni di Rigidezza a Taglio nella Struttura**
 - **Dissipazione dell'Energia senza collasso nel Caso di Evento Sismico**

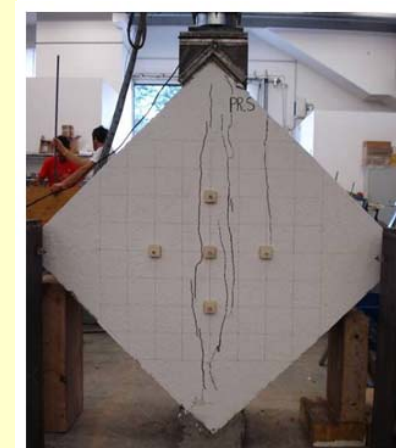
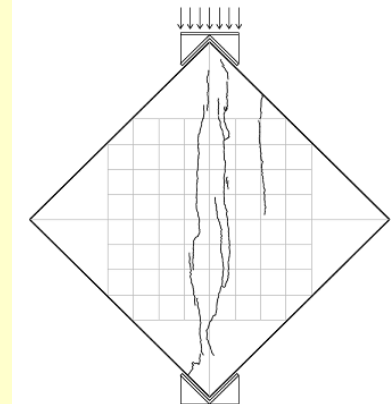
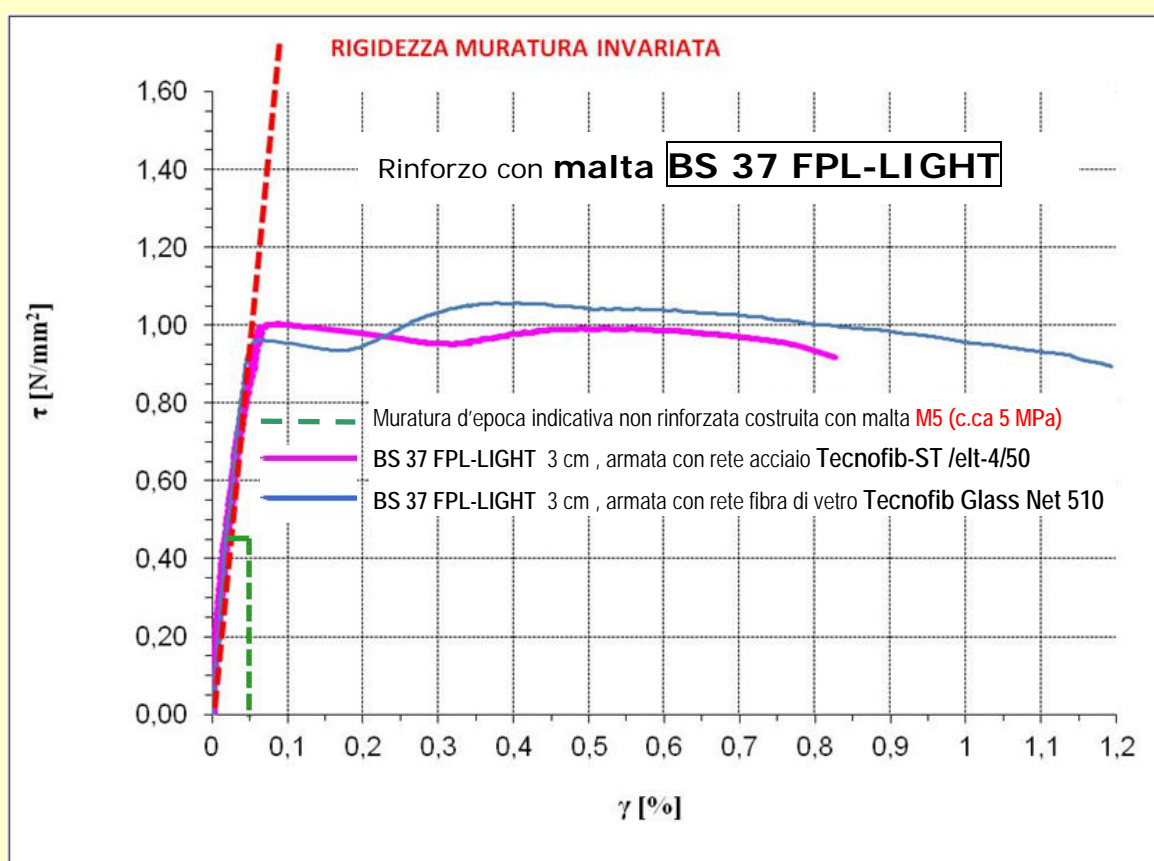
Esempi di Sperimentazione dei Sistemi **HFE-tec[®] muratura** con misure a compressione diagonale su muri dimensione 100x100x40 cm spessore intonacatura 3 cm



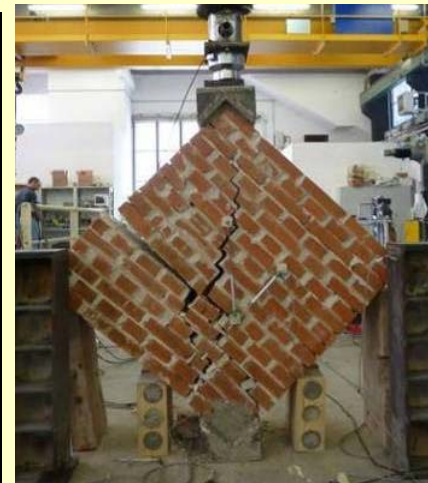
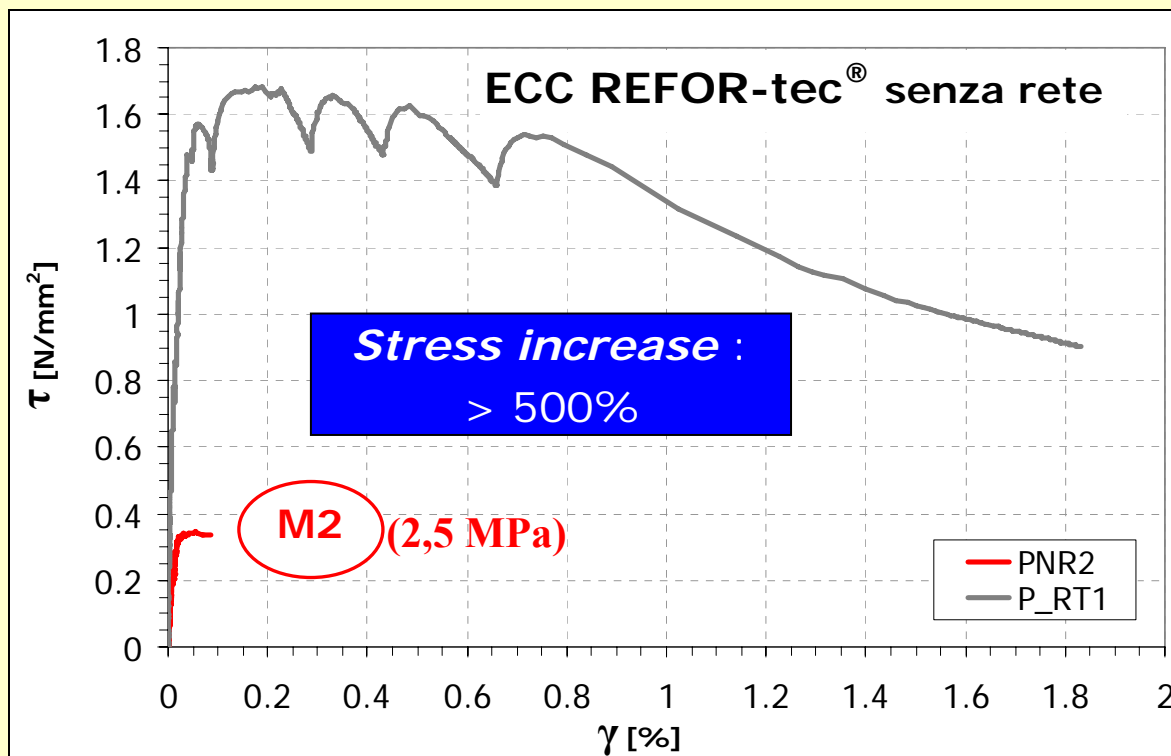
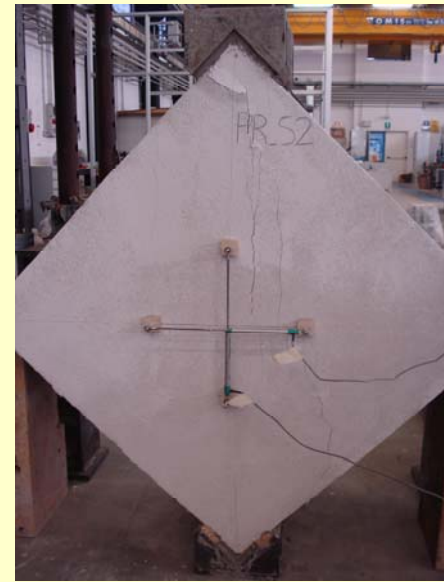
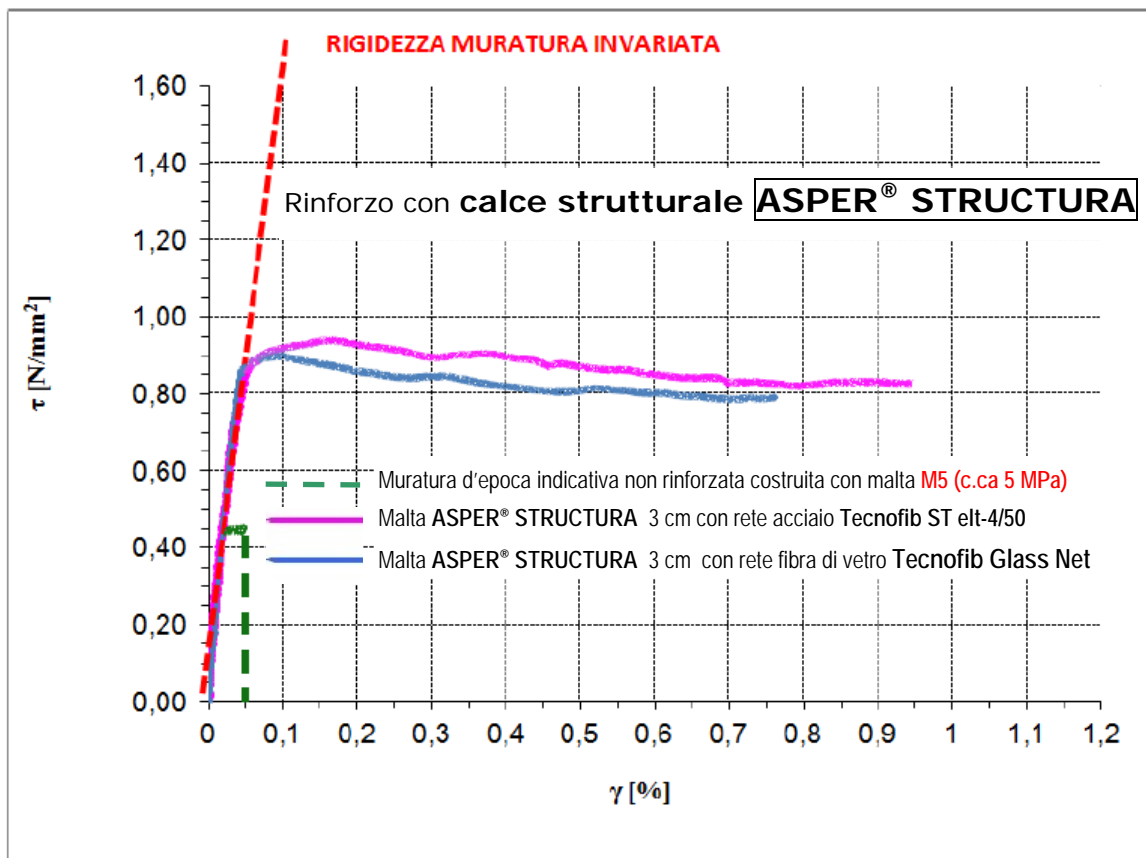
Determinazioni e misure per compressione diagonale su muratura intonacata con malte fibrorinforzate ad alta Energia di Deformazione, armate con rete acciaio o rete in fibra di vetro : Sistemi **HFE-tec[®] Muratura**



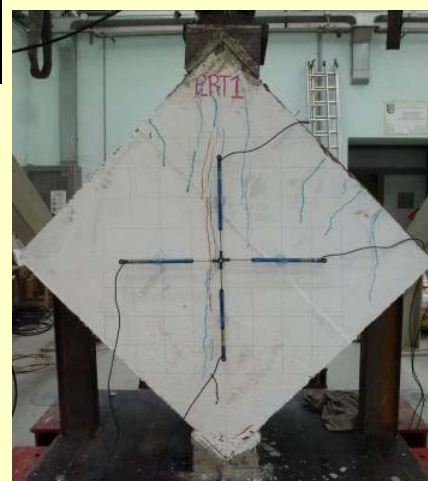
Quadro fessurativo della muratura non rinforzata : il muretto "scoppia"



Quadro fessurativo della muratura rinforzata HFE-tec[®] : integra



— PNR2
Muratura in mattoni pieni costruita con malta M2 (2,5 MPa) non rinforzata



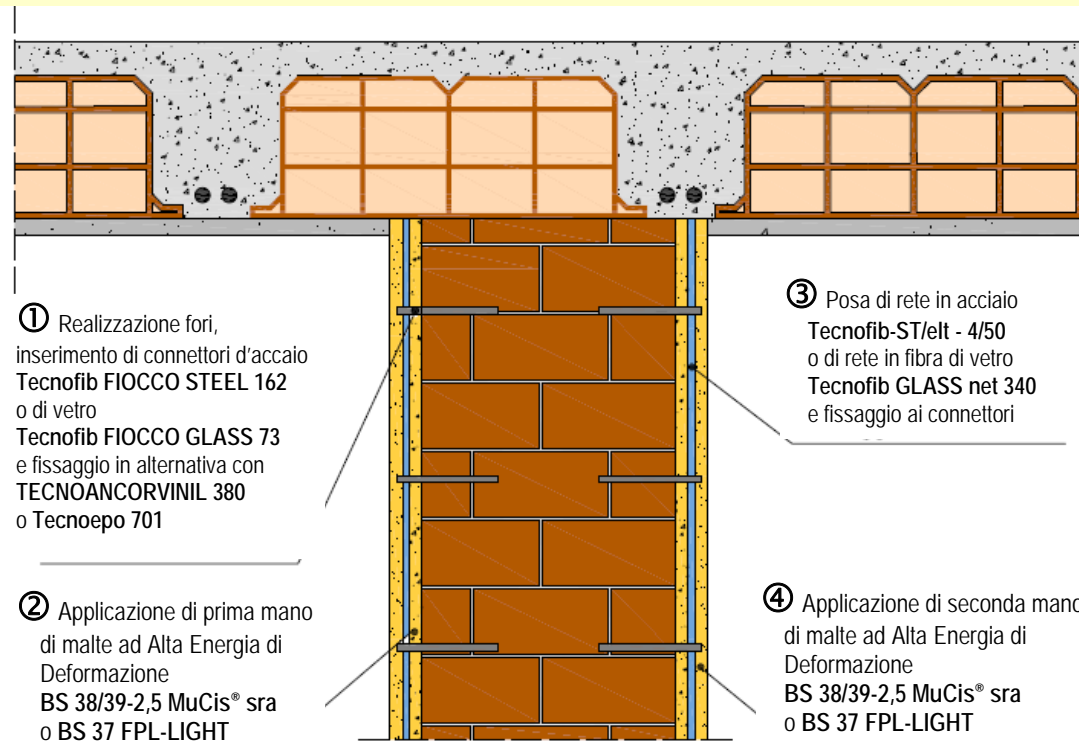
— P_RT1
Muratura in mattoni pieni costruita con malta M2 (2,5 MPa) rinforzata con 3 cm ECC REFOR-tec® - SENZA RETE - connettore acciaio Ø 8 mm passante

TIPOLOGIE APPLICATIVE

SISTEMI

di intonacatura armata
con la tecnica del
sandwich strutturale

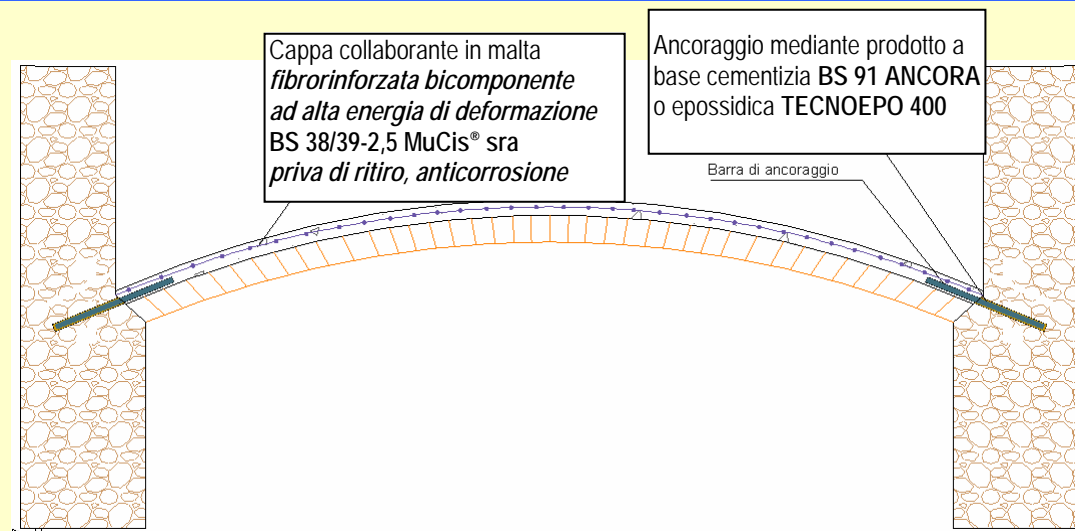
HIGH DUCTILITY



SISTEMI

con cappe estradossali
su strutture a volta

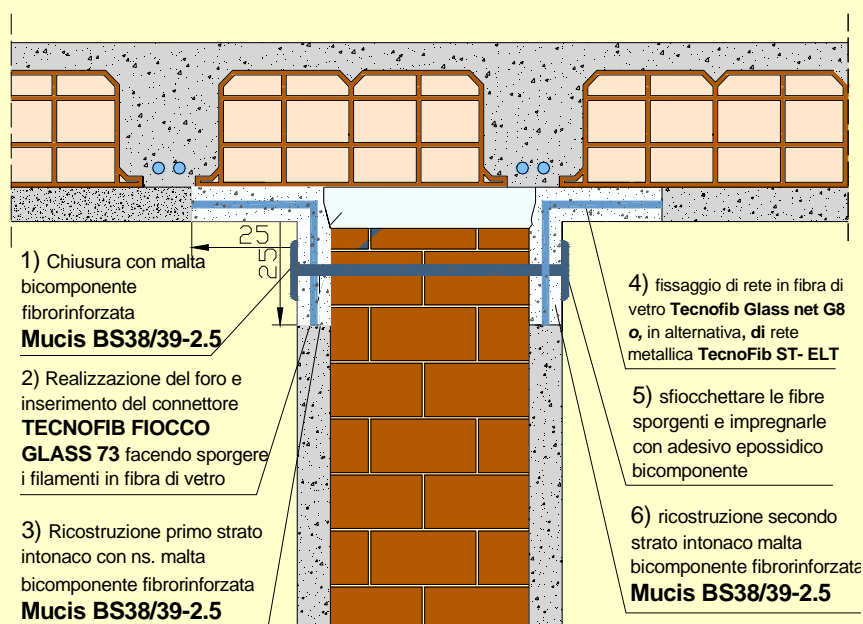
HIGH DUCTILITY



SISTEMI

antiribaltamento
su tramezzi, murature e
partizioni (in questo caso
riducendo lo spessore a
non più di 10 ÷ 20 mm)

HIGH DUCTILITY



Nota presentata al PROHITECH '14
 “2nd International Conference on
 Protection of Historical Constructions”
 7th-9th May 2014, Antalya - Turkey

**High Fracture Energy Technology and
 Engineered Cementitious Composites for the
 Ductile Reinforcement of Historical Structures**

MAIN PAGE GENERAL INFORMATION PROGRAMME TOPICS COMMITTEES PAPER SUBMISSION REGISTRATION & ACCOMMODATION SOCIAL TOUR CONTACT

2ND INTERNATIONAL CONFERENCE ON
 PROTECTION OF HISTORICAL CONSTRUCTIONS
 7 - 9 MAY 2014, ANTALYA - TURKEY

PROHITECH'14



BOĞAZIÇI UNIVERSITY



UNIVERSITY OF
 NAPLES "FEDERICO II"

IMPORTANT DATES

15	May'13	Abstract Submission Deadline
30	June'13	Notification of Abstract Acceptance
15	December'13	Full Paper Submission Deadline
28	February'14	Early Registration Deadline



NEW Special Session
 in honour of
 Victor Gioncu
 'Engineering and
 Architecture: The
 Everlasting Synergy for
 Marvels'

WELCOME TO 2ND INTERNATIONAL CONFERENCE ON PROTECTION OF
 HISTORICAL CONSTRUCTIONS

The main scope of PROHITECH is to highlight the importance of use of advanced technologies in the protection of historical structures which are prone to natural and man-made hazards. The first conference was held in Rome, 2009.

Gülay ALTAY (Turkey)
 Conference Co-Chair

Federico MAZZOLANI (Italy)
 Conference Co-Chair



BOĞAZIÇI UNIVERSITY



UNIVERSITY OF
 NAPLES "FEDERICO II"

IMPORTANT DATES

15	May'13	Abstract Submission Deadline
30	June'13	Notification of Abstract Acceptance
15	December'13	Full Paper Submission Deadline
28	February'14	Early Registration Deadline



ORGANIZING COMMITTEE

SCIENTIFIC COMMITTEE

ADVISORY COMMITTEE

SCIENTIFIC COMMITTEE

MAIN PAGE » COMMITTEES

- Zeynep AHUNBAY (Turkey)
- Görün ARUN (Turkey)
- M. Ghafory ASHTIANY (Iran)
- Charalampos BANIOTOPOULOS (U.K.)
- Ruben BORG (Malta)
- Antonio BORRI (Italy)
- Aomar IBEN BRAHIM (Morocco)
- Luis CALADO (Portugal)
- Mohamed CHEMROUK (Algeria)
- Paolo CLEMENTE (Italy)
- Gianfranco DE FELICE (Italy)
- Dan DUBINA (Romania)
- Beatrice FAGGIANO (Italy)
- Antonio FORMISANO (Italy)
- Victor GIONCU (Romania)
- Kiril GRAMATIKOV (R. of Macedonia)
- Angelo GUARINO (Italy)
- Ricardo HERRERA (Chile)
- Sung Gul HONG (South Korea)
- Jerzy JASIENKO (Poland)
- Sergio LAGOMARSINO (Italy)
- Raffaele LANDOLFO (Italy)
- Johanna LEISSNER (Germany)
- Robert LEVY (Israel)
- Guo-Qiang LI (China)
- Dan LUNGU (Romania)
- Hilmi LUS (Turkey)
- Alberto MANDARA (Italy)
- Turan ÖZTURAN (Turkey)
- Mariapaola RIGGIO (Italy)
- Haluk SUCUOĞLU (Turkey)
- Ljubomir TASKOV (R. of Macedonia)
- Ioannis VAYAS (Greece)
- Frantizek WALD (Czech Republic)
- Volker WETZK (Germany)
- Cem YALÇIN (Turkey)
- Roco ZARNIC (Slovenia)

High Fracture Energy Technology and Engineered Cementitious Composites for the Ductile Reinforcement of Historical Structures

Dario Rosignoli¹, Francesco Rosignoli², Roland Vaes³

¹TECNOCHEM ITALIANA SpA, Barzana Bergamo, Italy, dario.rosignoli@tecnocem.it

²TECNOCHEM ITALIANA SpA, Barzana Bergamo, Italy, francesco.rosignoli@tecnocem.it

³TECNOCHEM ITALIANA SpA, Houthalen, Belgium, rolandvaes@tecnocem.eu

In order to be properly and better understood putting in evidence REFOR-tec® performances :

Table 2. Mechanical values of mortars.

Mortar type	Compression strength [N/mm ²]	Flexural strength [N/mm ²]
M10	14	4
M2	2.5	1
BS38/39 2.5	40	10
BS37 FPL-LIGHT	20	8
HFE/ECC	130	32

Mortar Type used between bricks	Compression strength [N/mm ²]	Flexural strength [N/mm ²]
M10	14	4
M2	2.5	1

Reinforcing Mortar Type	Compression strength [N/mm ²]	Flexural strength [N/mm ²]	Mortar Type used between bricks
BS38/39 2.5	40	10	M10
BS37 FPL-LIGHT	20	8	M10
HFE/ECC (REFOR-tec®)	130	32	M2

Figure 3. Shear stress strain relationship for the panels tested: a) Panel built with mortar M10 / UNI-EN 998-2

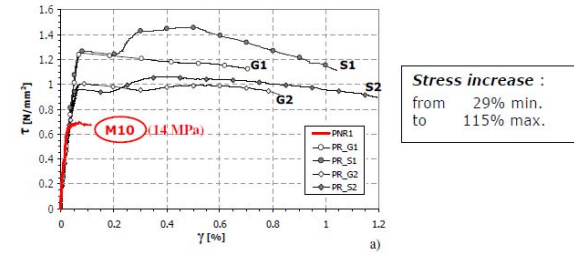


Figure 3. Shear stress strain relationship for the panels tested: b) Panel built with mortar M2 / UNI-EN 998-2

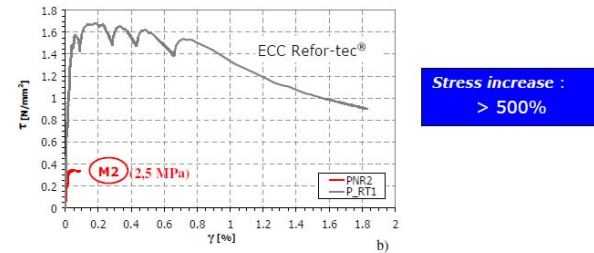


Table 1. Reinforcement configuration for the seven panels tested.

Type mortar	Type mortar strengthened layer	Type connector	Type mesh	
PNR1	M10/UNI-EN 998-2	No layer	No connector	No mesh
PR_G 1	M10/UNI-EN 998-2	BS 38/39 2.5	Fiber glass connectors - Ø 10 mm	Fiber glass mesh - 10x8cm
PR_S 1	M10/UNI-EN 998-2	BS 38/39 2.5	Steel connectors - Ø 6 mm	Steel mesh - 50x50 mm Wire diameter 4 mm
PR_G 2	M10/UNI-EN 998-2	BS 37 FPL-LIGHT	Steel connectors - Ø 6 mm	Fiber glass mesh - 10x8cm
PR_S 2	M10/UNI-EN 998-2	BS 37 FPL-LIGHT	Steel connectors - Ø 6 mm	Steel mesh - 50x50 mm Wire diameter Ø 4 mm
PNR2	M2/UNI-EN 998-2	No layer	No connector	No mesh
P_RT1	M2/UNI-EN 998-2	High Fracture Energy/ ECC Refor-tec	Steel connectors - Ø 8 mm	No mesh

High Fracture Energy Technology and Engineered Cementitious Composites for the Ductile Reinforcement of Historical Structures

Dario Rosignoli¹, Francesco Rosignoli², Roland Vaes³

¹TECNOCHEM ITALIANA SpA, Barzana Bergamo, Italy, dario.rosignoli@tecnocem.it

²TECNOCHEM ITALIANA SpA, Barzana Bergamo, Italy, francesco.rosignoli@tecnocem.it

³TECNOCHEM ITALIANA SpA, Houthalen, Belgium, rolandvaes@tecnocem.eu

ABSTRACT: Cracks are an inevitable phenomena of cement based materials such as mortars and concretes. Even though they will never be fully preventable there are possibilities to control their formation and characteristics such as their total number as well as their depth and width in order to exclude negative effects on a material's or structure's durability and integrity.

Among others cracks can be the reason for serious deterioration processes within concrete structures. Crack width control becomes important. In other cases the more important point is to find a way how the load bearing capacity of a concrete element within a building structure can be maintained even though cracks cannot be prevented. Earthquakes, for example, lead to deformations that inevitably cause cracks within stiff concrete structures. Only if there are elements that consume a certain amount of this deformation energy, for example by the formation of cracks without collapsing, the structural integrity of buildings can be assured.

The High Fracture Energy Technology allows to control micro cracks formation in cement based materials by increasing the materials overall ductility which is referred to as fracture energy in materials engineering. Formulations based on ECC - Engineered Cementitious Composites can take tensile loading, are able to control cracks in a narrow range, exhibit high fracture energy and large tensile deformation and ductility, open a wide range of applications.

A targeted adjustment for ECC of cement based material requires a three way approach: the cement & binders based matrix and the high elasticity modulus polymer fibers as well as their interfaced need to feature coordinated properties whose interaction produce the intended performances. High Fracture Energy Technology and Engineered Cementitious Composites enable Engineers & Architects to wide range of applications in historical structures also and particularly in seismic areas for ductile structural reinforcement. Wide range of HFE / ECC formulations have been formulated and applied. Case studies are briefly described.

1 INTRODUCTION

Traditionally a large percentage of the Italian building stock is made of masonry, with walls often made of hollow core clay bricks. These buildings are usually designed only for gravity loads, with no or little concern for seismic actions. Accordingly, they are extremely vulnerable to seismic actions, as shown by the recent earthquakes of L'Aquila (2009) and Emilia (2012).

After the new seismic classification of the Italian territory, a large number of these buildings will need seismic retrofit works in order to be able to meet the new code requirements. Hence, seismic strengthening techniques for masonry buildings are rapidly gaining interest.

Seismic performance of existing masonry buildings is affected by various failure dealing with either out of plane (bending) and in plane (shear) behavior of

walls. The present paper will focus on the shear failure mechanisms.

Seismic in plane behavior of masonry walls can be experimentally simulated by two kinds of tests. On one hand it can be reproduced by the so called "diagonal compression test", ruled by ASTM 519, and, on the other hand, it can be simulated by "shear compression test". Besides other findings gained by the above research, it can be observed that strength values obtained by diagonal compression tests are generally more conservative than those given by shear compression tests. Both tests methods pointed out the general lack in shear strength of those masonry walls. Consequently, masonry structures are generally in need for strengthening in shear and various technique can be adopted with that aim.

Several strengthening techniques have been used for this purpose such as: the use of grout injection; deep re-sealing of mortar joint and the use of composite

materials based on carbon or glass fibers. One of the latest technique for shear strengthening of the masonry walls consist of using composite material fiber reinforced polymers (FRP). This reinforcement technique provides a series of advantages, such as the negligible influence of the self weight of the reinforcement on the total mass of the structure and the ease of installation. However, this type of reinforcement has several limitations as the relatively high costs and low fire resistance due to the use of epoxy resins for glueing the fibers to the surface of the walls.

The present paper reports the main results obtained by an experimental campaign carried out at the laboratory of the university of Bergamo on brick masonry panels. In particular, two unreinforced masonry panel and five strengthened panels have been tested under diagonal compression with the main aim of quantifying their shear strength.

Four specimen were reinforced by using an innovative strengthening system based on the combined use of a steel or glass fiber grid embedded in a base mortar. Such system is composed by two layers applied on both sides of the panels and connected by through joints made of steel bars or glass fiber wires.

A specimen has been reinforced by the application, on both faces of the masonry panel, of a 30 mm thickness layer of high fracture energy fiber reinforced ECC microconcrete.

The tests results show that the strengthening system present significant benefits in terms of increasing the shear strength and ductility with considerable advantages in the case of a seismic event.

2 EXPERIMENTAL PROGRAM

The experimental program consists of a diagonal compression tests on a total of seven brick masonry

panels with dimensions of 100x100 cm and thickness equal to 40 cm. Each panel was made of sixteen parallel rows of solid 22.5x10x5 cm bricks. Two panel (PNR1 and PNR2), used as a reference specimens, have not been strengthened.

Four specimens were reinforced by using an innovative strengthening system based on the combined use of a steel or glass fiber grid embedded in a base mortar. Such system is composed by two layers applied on both sides of the panels and connected by through joints made of steel bars or glass fiber wires. Two strengthening panels were reinforced with a cement mortar (BS38/39 2.5) and the other two panels with a cement mortar with a lower compression strength (BS37 FPL-LIGHT). The different reinforcement configurations, with different combination of grid type, mortar type and connectors type, are shown in table 1.

The procedure for the application of the strengthening technique can be summarized in the following phases: [1] Execution of five through hole with a diameter of 30 mm for the insertion of the connectors. [2] Insertion of the connectors (steel bars or glass fiber wires) and subsequently injection of epoxy resin (Tecnoepo 400) into the holes to ensure the anchoring of the connectors. [3] Application of a layer of cement rough coat. [4] Application of the first hand of mortar with a thickness of 15 mm. [5] Positioning of the mesh on both faces of the panels and anchoring to the connectors. [6] Application of the second hand of mortar with a thickness of 15 mm. Five connectors for square meter of panel were placed. The thickness of the strengthening layer for all four reinforced panels is equal to 30 mm for each side for a total thickness of the specimen of 46 cm. Figure 1 shows the different phases for the application of the strengthening layer of the panel PR_G1. The mechanical properties of the mortars, which were used for the construction of the panels and of the strengthening layers, were derived from

Table 1. Reinforcement configuration for the seven panel tested.

Type mortar	Type mortar strengthened layer	Type connector	Type mesh	
PNR1	M10/UNI-EN 998-2	No layer	No connector	No mesh
PR_G 1	M10/UNI-EN 998-2	BS 38/39 2.5	Fiber glass connectors - Ø 10 mm	Fiber glass mesh - 10x8cm
PR_S 1	M10/UNI-EN 998-2	BS 38/39 2.5	Steel connectors - Ø 6 mm	Steel mesh - 50x50 mm Wire diameter 4 mm
PR_G 2	M10/UNI-EN 998-2	BS 37 FPL-LIGHT	Steel connectors - Ø 6 mm	Fiber glass mesh - 10x8cm
PR_S 2	M10/UNI-EN 998-2	BS 37 FPL-LIGHT	Steel connectors - Ø 6 mm	Steel mesh - 50x50 mm Wire diameter Ø 4 mm
PNR2	M2/UNI-EN 998-2	No layer	No connector	No mesh
P_RT1	M2/UNI-EN 998-2	High Fracture Energy/ ECC Refor-tec	Steel connectors - Ø 8 mm	No mesh

bending and compression tests (according to UNI EN 998-2; 2004): 40mm x 40 mm x 160 mm mortar prisms were tested in flexure with three point bending tests and 8 cubes, obtained from failed mortar specimen in flexure, were subjected to the compression test. The results of the tests for the three types of mortar used are reported in table 2.

Table 2. Mechanicals values of mortars.

Mortar type	Compression strength [N/mm ²]	Flexural strength [N/mm ²]
M10	14	4
M2	2.5	1
BS38/39 2.5	40	10
BS37 FPL-LIGHT	20	8
HFE/ECC	130	32

The mechanical properties of steel and fiber glass grids were provided by the manufacturer. For the glass grid the tensile strength was 6600 N/cm and the ultimate tensile strain is 3.5%, for the steel mesh the tensile strength of a single wire is 550 N/mm² and the ultimate tensile strain about 10%.

The last panel (P_RT1) has been reinforced by the application of a layer, 30 mm thickness, of high fracture energy fiber reinforced ECC microconcrete. Five through connectors, made with steel bars with diameter of 8 mm, were placed. The procedure for

the application of the strengthening technique can be summarized in the following phases: [1] Execution of five through hole with a diameter of 40 mm for the insertion of the connectors; [2] Hydro cleaning of the surface of the masonry to ensure the maximum bond between the substrate and HFE/ECC; [3] Insertion of the connectors; [4] Realization of the moulds; [5] Saturation of the surface of the masonry to allow the maximum adhesion of the high performance HFE/ECC microconcrete; [6] Casting of the self levelling high performance HFE/ECC microconcrete. The free flowing property of the microconcrete is penetrating with complete filling up of the 40 mm hole containing the steel bar. Figure 2 shows the different phases for the application of the strengthening layer of the panel P_RT1.

The HFE/ECC, used for the reinforcement, presents an almost self levelling rheology, that should be cast in moulds, a compressive strength of 130 MPa and a tensile strength of 6 MPa. Direct tensile test on dog-bone specimens and four point bending tests on small beams were performed in order to characterize the material in tension and the results show the strain hardening behavior in tension of the material. The strengthening material is reinforced with straight steel and polymer fibers.

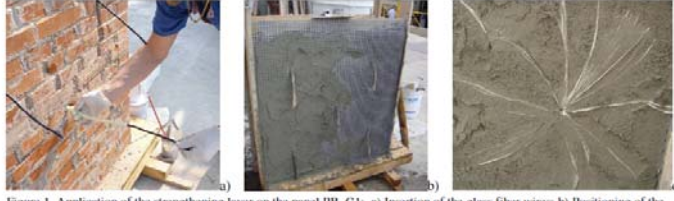


Figure 1. Application of the strengthening layer on the panel PR_G1: a) Insertion of the glass fiber wires; b) Positioning of the mesh; c) Anchoring of the connectors.

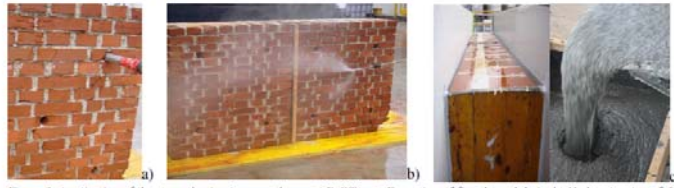


Figure 2. Application of the strengthening layer on the panel P_RT1: a) Execution of five through hole; b) Hydro cleaning of the surface; c) Realization of the moulds casting.

3 TEST SET UP

The diagonal compression load is applied to the corners of the panels by adopting a steel reacting frame. The load was applied by means of an electromechanical jack having a loading capacity of 1000 kN with a close loop control system. The tests were conducted under displacement control, in order to record the panels post-peak response, with a constant speed equal to 0.01 mm/sec. The compression load is applied to the masonry through two steel shoes placed in correspondence of two opposite corners of the panels. The test layout follows the requirements of ASTM E 519-81, although some change has been introduced, as the different size of the panels to be tested and of the loading shoes, in order to properly account for the size of the type of masonry to be tested. Between the steel shoes and the specimens has been realized a fast setting shrinkage free mortar bed for a better distribution of the load and in order to avoid a brittle failure of the panels edges.

Potentiometric and LVDT transducer were used for monitoring the in-plane and out-of-plane displacement. Two potentiometric transducers were placed on each side of the panels along the two diagonals to record the vertical and horizontal displacement and therefore strains. These transducers had a measurement length of 400 mm. This was based on experimental observations from similar experiments, where it was found that shear cracks developed in the central area of the panels. Two LVDT were installed perpendicularly to the panel surface to measure out-of-plane displacements. Before setting the instruments, the panels were whitewashed in order to record the crack pattern by means of a high-resolution camera.

4 EXPERIMENTAL RESULTS

Figure 3 show the shear stress – shear strain curves for the seven panels tested.

Shear strength τ , reported in figure 3, for the various panel tested, can be obtained on the basis of the current experimental load P , according to ASTM E 519-81, with the following conventional formula:

$$\tau = 0.707 \frac{P}{A_n} \quad (1)$$

where A_n is the net section area of the un-cracked section of the panels.

The average strains, ϵ_v and ϵ_h , can be calculated on the basis of the average displacements on the two sides of the panels:

$$\epsilon_v = \frac{\Delta V}{g} \quad \epsilon_h = \frac{\Delta H}{g} \quad (2)$$

where ΔV and ΔH are the vertical shortening and horizontal extension along the compressive and tensile diagonal, respectively, and g is the vertical gage length (400mm).

The shear strain value, γ , which is reported in figure 3, is computed as:

$$\gamma = \epsilon_v + \epsilon_h \quad (3)$$

The two unreinforced specimens (PNR1 and PNR2) presented a brittle failure due to the rupture of the mortar beds along the loaded diagonal. The average failure loads, used as reference value for the comparison with the strengthened specimens results, are equal to 389 kN (panel PNR1) and 197 kN (panel PNR2). The ductility factor is about 1.6% for both panels. The PNR2 panel after the diagonal compression test is shown in figure 4. All the five strengthened panels show a considerable increase of the maximum load compared to unreinforced panel.

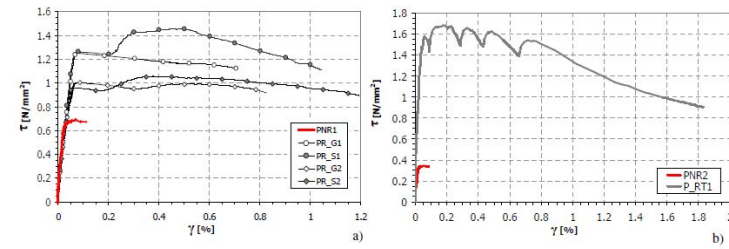


Figure 3. Shear stress-shear strain relationship for the panels tested: a) Panel built with mortar M10/UNI-EN 998-2; b) Panel built with mortar M2/UNI-EN 998-2.

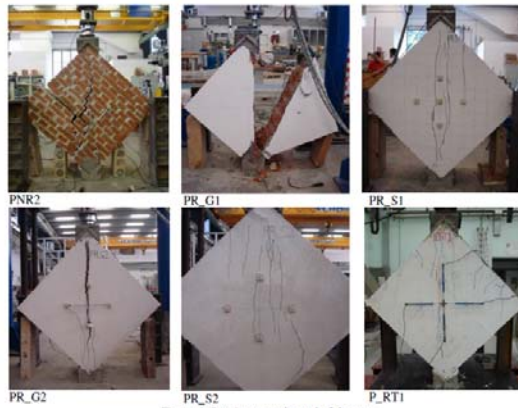


Figure 4. Specimens at the end of the tests.

The panel P_RT1, strengthened with a HFE/ECC layers, shows the maximum increase of resistance: the peak load exhibits an increment of 4.82 times compared to that of the panel without reinforcement (PNR2). Also the two panels strengthened with a BS38/39 layers show a good increase of the maximum load with respect to the unreinforced panels (PNR1). For the specimen with a fiber glass grid (PR_G1), the maximum load exhibits an increase of 2 times compared to the peak load of the un-strengthened panels, while for the specimens with a steel grid (PR_S1) the increase is equal to 2.4 times. For the two panels strengthened with a BS37 mortar, that shows a lower compression strength, the increase of strength is smaller: the increment of maximum load is about 1.7 times for both panels compared to the panel PNR1. The presence of the strengthened layers on the both sides of the specimens has considerably increased the ductility for both types of reinforced panels. The wall with the HFE/ECC layers shows the greater ductility: the ductility factor is 26.14%, value sixteen times higher compared to the unreinforced specimen. The two walls strengthened with a steel grid (PR_S1 and PR_S2) showed high ductility too. After the onset of a first vertical crack, the load began to increase again and several vertical cracks appeared along the compression diagonal. The tests were stopped when the load dropped below 80% of the maximum load,

to avoid the collapse of the panels and damage to the instrumentation. The ductility factor is 11.60 for the wall with a BS38/39 layers and 18.61 for the panel with a BS37 mortar, values more than ten times higher than those of the non-reinforced panel. Even panels strengthened with glass fiber mesh (PR_G1 and PR_G2) showed a moderate increase in ductility. After reaching the maximum load the two panels have achieved shear strains equal to about 0.8%. The collapse occurred due to the opening of a single vertical crack which run through bricks and mortar beds by ripping the fiber glass mesh. The ductility factor for both panels is equal to 9.6%, a value 7.5 times greater than the one shown by the panel without strengthening layers. The panels at the end of the tests are shown in Figure 4. The two strengthened systems studied in this research display considerable increase in ductility without, however, producing significant changes in the shear stiffness of the structure. Therefore, this type of strengthening intervention does not change the static scheme of the structure neither cause redistribution of stiffness in the building. The main results for the tests are summarized in table 3. The values of τ_{max} , γ_{max} , $\epsilon_{v,max}$, $\epsilon_{h,max}$ are the stress and strain values evaluated at the maximum load and the τ_u , γ_u are the stress and strain values evaluated when the load drops at the 80% of the maximum load.

Table 3. Experimental results

*For the panels showing a brittle failure, the values of τ_u and γ_u have been evaluated at the end of the tests

**Evaluated using the first cracking load ($\gamma_{cr} \approx \gamma_u$)

Specimen	P_{max}	τ_{max}	$\epsilon_{v,max}$	$\epsilon_{h,max}$	γ_{max}	τ_u	γ_u	G	μ
	[kN]	[N/mm ²]	[%]	[%]	[%]	[N/mm ²]	[%]	[N/mm ²]	[%]
PNR1*	389.3	0.688	0.032	0.038	0.070	0.662	0.113	2410	1.52
PR_G1	814.8	1.252	0.050	0.024	0.074	1.122	0.707	2569	9.59
PR_S1	948.9	1.458	0.095	0.397	0.492	1.167	0.957	2693	11.60**
PR_G2	652.3	1.003	0.050	0.036	0.086	0.918	0.827	2644	9.65
PR_S2	687.7	1.057	0.111	0.266	0.377	0.894	1.194	2512	18.61**
PNR2*	197.4	0.349	0.026	0.029	0.054	0.335	0.087	2351	1.59
P_RT1	1095.2	1.683	0.065	0.124	0.189	1.317	1.023	8774	26.14**

The modulus of rigidity, G , is calculated as the secant modulus between the origin and the stress equal to 30% of the peak stress. The local panel ductility, μ , has been computed by the following equation:

$$\mu = \frac{\tau_u}{\tau_{max}} \quad (4)$$

where τ_{max} is the shear stress corresponding to the maximum load and τ_u is the shear stress at 80% of the maximum load (or at the end of the test for the panels that show a brittle failure).

5 CONCLUSION

Diagonal compression tests were conducted on six masonry panels to confirm the effectiveness of this seismic strengthening technique. On the basis of the experimental results the following conclusions can be drawn:

- All the strengthened panels shows a significant increase in strength due to the use of the high performance mortar. The specimen strengthened with the HFE/ECC layers exhibits an increment of 4.82 times compared to that of the unreinforced panel (PNR2).
- The strengthened panels show a significant increase of ductility. The specimen strengthened with the HFE/ECC layers exhibit the highest ductility: its ductility factor is 26.14% value sixteen times higher than the un-reinforced panel. The walls strengthened with a glass fiber mesh show the smaller increase of ductility with ductility factor of about 9.6%.
- The strengthened system studied in this research does not modify the shear stiffness of the structure; therefore it does not change the static scheme of the structure neither cause redistribution of stiffness in the buildings.

REFERENCES

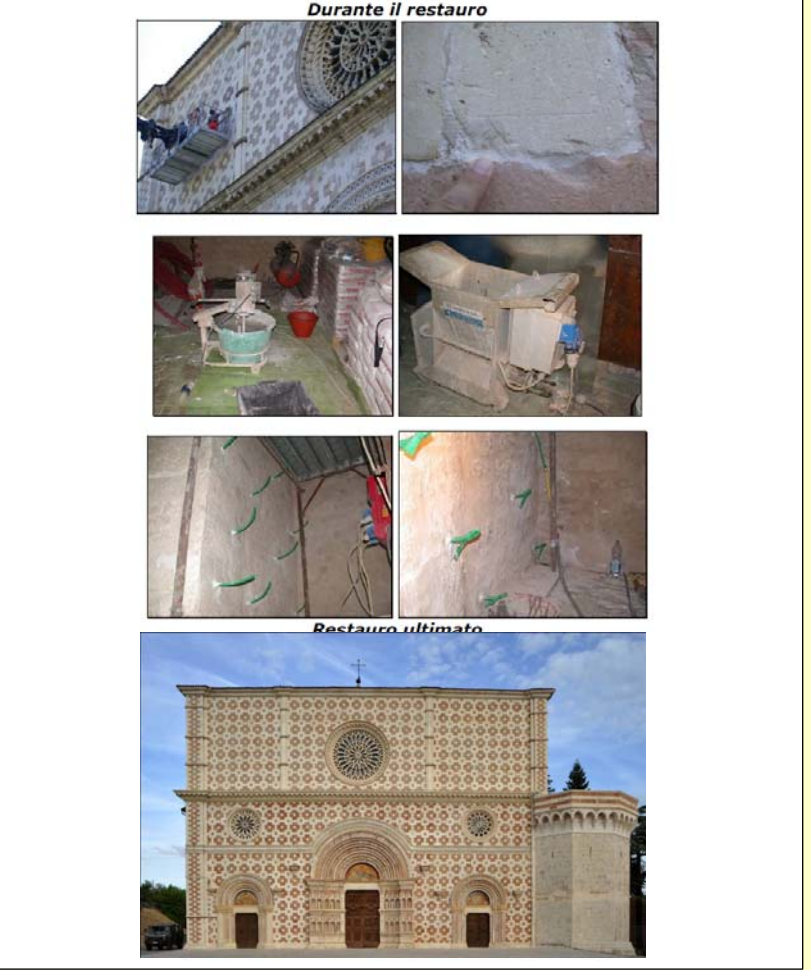
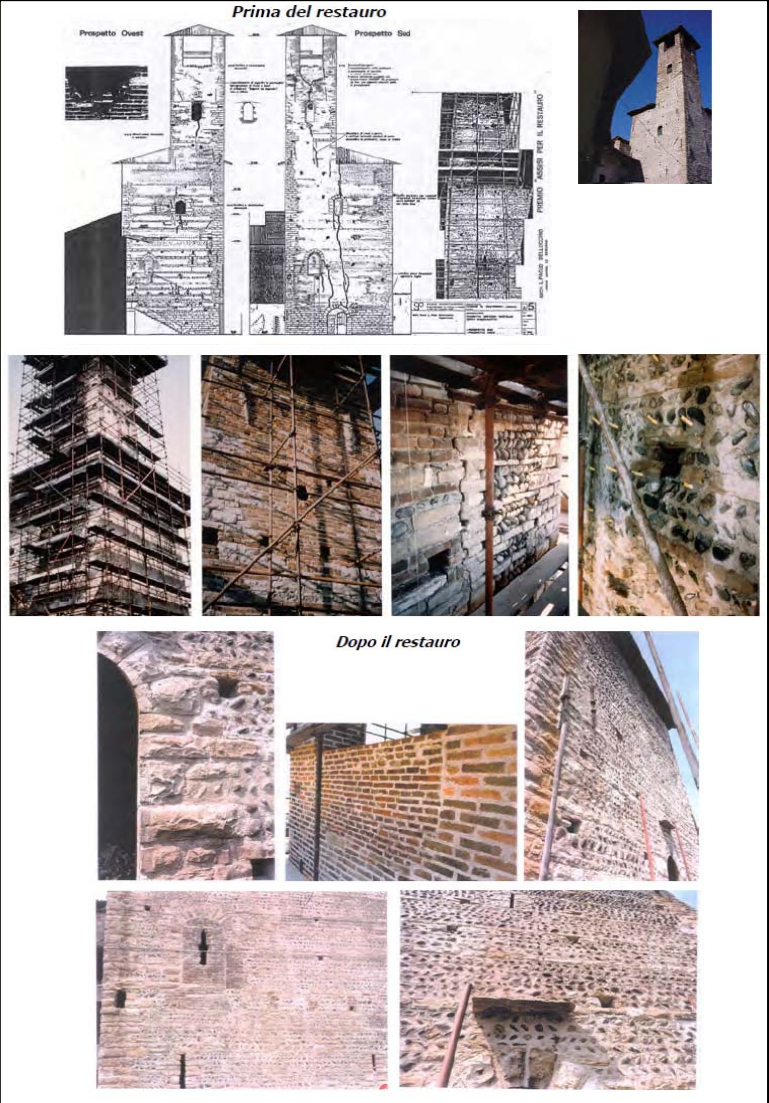
- Rosignoli, D., Rosignoli, R., 2005-2009. *Consolidating Special Injections and Reinforcing Ductile Technologies in the Masonry Structure of the facade of the prestigious historical Basilica S. Maria in Collemaio - L'Aquila, 2005*. The facade resisted to the April 2009 seismic event, *Case History Tecnochem Italiana*.
- Borri, A., Castori, G. and Corradi, M., 2011. *Shear behaviour of masonry panels strengthened by high strength steel cords*. *Construction and Building Materials*, 25: 494-503.
- Corradi, M., Borri, A. and Vignoli, A., 2008. *Experimental evaluation of the in-plane shear behaviour of masonry walls retrofitted using conventional and innovative methods*. *Journal of the British Masonry Society*, 21(1): 29-42.
- Faella, C., Martinelli, E., Nigro, E. and Paciello, S., 2010. *Shear capacity of masonry walls external strengthened by a cement-based composite materials: An experimental campaign*. *Construction and Building Materials*, 24: 84-93.
- Gabor, A., Benami, A., Jacquelin, E. and Lebon, F., 2006. *Modelling approaches of the in-plane shear behaviour of unreinforced and FRP strengthened masonry panels*. *Composite Structures*, 74: 277-288.
- Marcari, G., Manfredi, G., Prota, A. and Pecce, M., 2007. *In-plane shear performance of masonry panels strengthened with FRP*. *Composites Part B: Engineering*, 30(7-8): 887-901.
- Valluzzi, M.R., Tinazzi, D. and Modena, C., 2002. *Shear behaviour of masonry panels strengthened by FRP laminates*. *Construction of Building Materials*, 16(4): 409-416.
- ASTM E 519-81, 1981. *Standard test Method for Diagonal Tension (Shear) in Masonry Assemblages*. American Society of Testing Materials.
- UNI EN 998-2, 2004. *Specification for mortar for masonry-Masonry mortar*.

vedi Nota completa nella sezione "NEWSLETTER" del ns. sito web www.tecnochem.it

Due Prestigiosi Esempi di Restauro e Consolidamento di muratura tramite iniezioni LIME INJECTION, stilatura fughe e parziali rifacimenti con malte ad Alta Energia di Deformazione, senza intonacatura

**Torre del Castello di Martinengo
Bergamo, sec. XII-XIII**
operazioni di restauro e consolidamento eseguite nell'anno 1986 **PREMIO "ASSISI PER IL RESTAURO"**

**Facciata della Basilica di Collemaggio
L'Aquila, sec. XVI**
operazioni di restauro e consolidamento con prodotti e tecnologie (tecnologia base = **LIME INJECTION**) della Tecnochem Italiana eseguite nell'anno 2005.
la facciata ha resistito al recente sisma dell'Aprile 2009!



Alcune applicazioni dei Sistemi HFE-tec® muratura



BS 38/39-2,5 MuCis® sra



Tecnofib TETRAGLASS



Tecnofib TETRAGLASS
Tecnofib FIOCCO glass 73



Tecnoepo 701

Tecnoepo 701/UNIC



Tecnofib CW 240



Tecnofib FIOCCO C240



Tecnoepo 701/UNIC



Tecnofib C240



Tecnobolt®



Richieste di Informazioni e/o Assistenza :

U.A.P.P. – Ufficio Assistenza Promozione Progettuale
e-mail : uapp@tecnochem.it

Consulta il nostro sito
www.tecnochem.it